



Reopening Campus: A Dialogue

HOSTED BY
THE CUYAMACA COLLEGE COUNCIL
APRIL 28, 2020

Your Device Has Been Muted

Session Format

Host: Julianna Barnes, President

Moderators: Kim Dudzik, Academic Senate President

Natalija Worrell, Classified Senate President

Technical Facilitator: Valeri Wilson, Executive Assistant

- Your devices have been muted given the large number of participants
- Please use the Chat feature
- The Moderators will pause to respond to questions periodically throughout the session

Agenda

Welcome

Overview and Introductions

Factors to Modify the Stay-at-Home Order

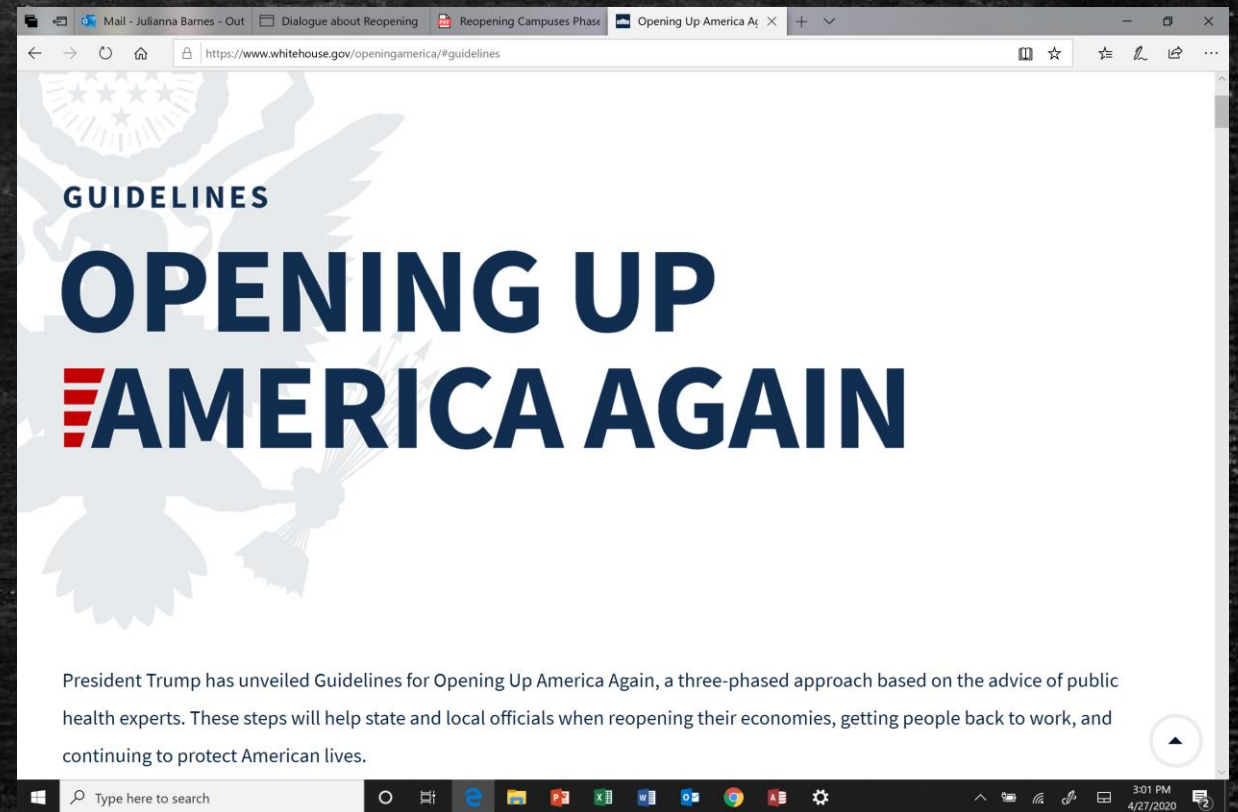
Current District and College Planning Efforts

Questions, Thoughts, & Suggestions from the Audience

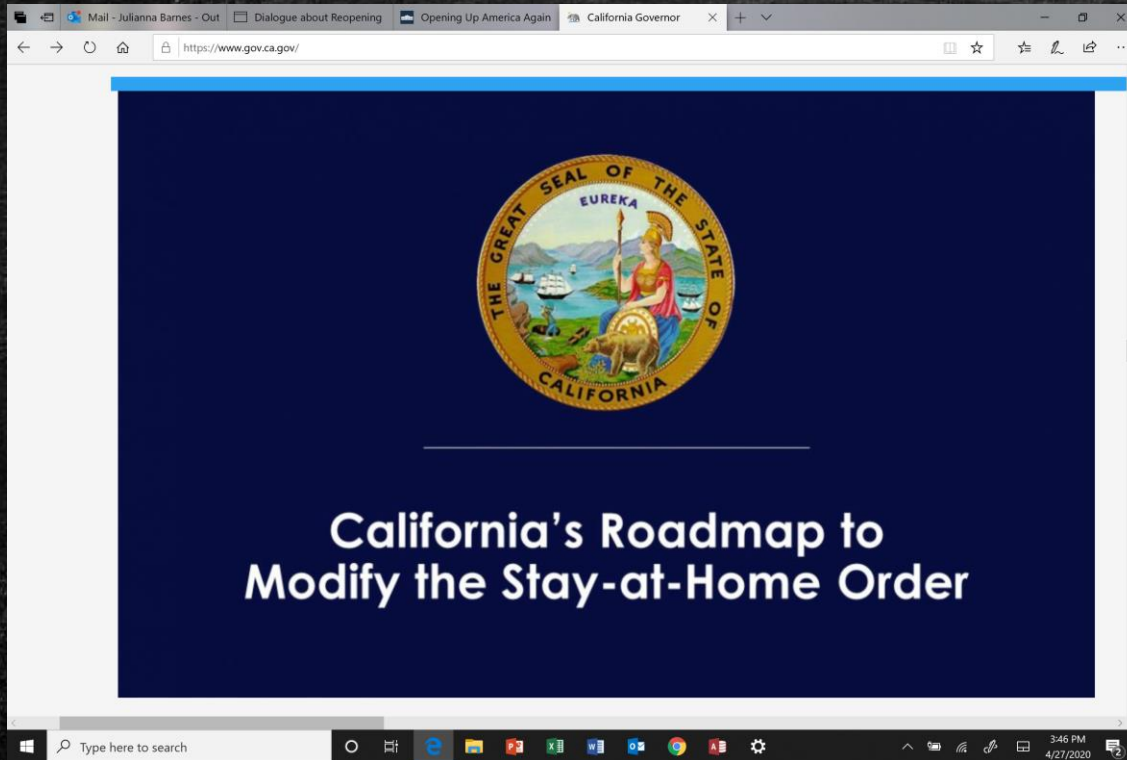
Recap and Next Steps

The White House & the CDC: Phased Comeback

- 1) Symptoms- Downward trajectory within 14 day period
- 2) Cases- Downward trajectory within 14 day period
- 3) Hospitals- Treat all patients without crisis care & Robust testing for at-risk healthcare workers



California's 6 indicators for modifying the Stay-at-Home Order



1. The ability to monitor and protect our communities through testing, contact tracing, isolating, and supporting those who are positive or exposed
2. The ability to prevent infection in people who are at risk for more severe COVID-19
3. The ability of the hospital and health systems to handle surges
4. The ability to develop therapeutics to meet the demand
5. The ability for businesses, schools, and child-care facilities to support physical distancing
6. The ability to determine when to reinstitute certain measures, such as the stay-at-home orders, if necessary

San Diego's Stay-at-Home Order

- Issued until April 30- can be extended
- Most all of the restrictions previously imposed still stand
- Some relaxing of restrictions
 - Limited access to beaches
 - Parks, Golf Courses to relax restrictions May 1
- Effective May 1, San Diegians must wear facial coverings in public

What plans are in place
to reopen campus?

Considerations before Reopening Campus

- Federal, State, and Local Mandates & Guidelines
- Personal Protective Equipment
- Cleaning and Sanitation Supplies
- Preparation of Facilities (e.g. sanitized, furniture arrangements to promote physical distancing)
- Human resources implications (vulnerable groups, childcare issues, etc.)
- Plans to report and respond to positive cases and exposures
- Plans should we have another stay-at-home order

GCCCD: Three (3) Phases Planning Framework

- Pre-Return – limited access to essential workers
 - Grounds ☒
 - Custodial ☒
 - Planning needs
- Phase 1 – Partial Return
 - High risk and > 65 remain at home
 - No activities or gatherings > 10
 - Required physical distancing for all
 - Required PPE
 - Limited access to classrooms and spaces (numbers)
 - Strict Sanitation requirements

Source: DEC April 17, 2020

GCCCD: Three (3) Phased Planning Framework

- Phase 2 – Full return with some limitations
 - No activities or gatherings > XX
 - Physical distancing expectations
 - Strict sanitation requirements
 - Prepare to resume temporary stay-at-home directives
- Phase 3 – Return to operations (testing/vaccine in place)
 - Physical distancing advised
 - Higher demand for remote delivery
 - Plan to address more automated processes, where feasible

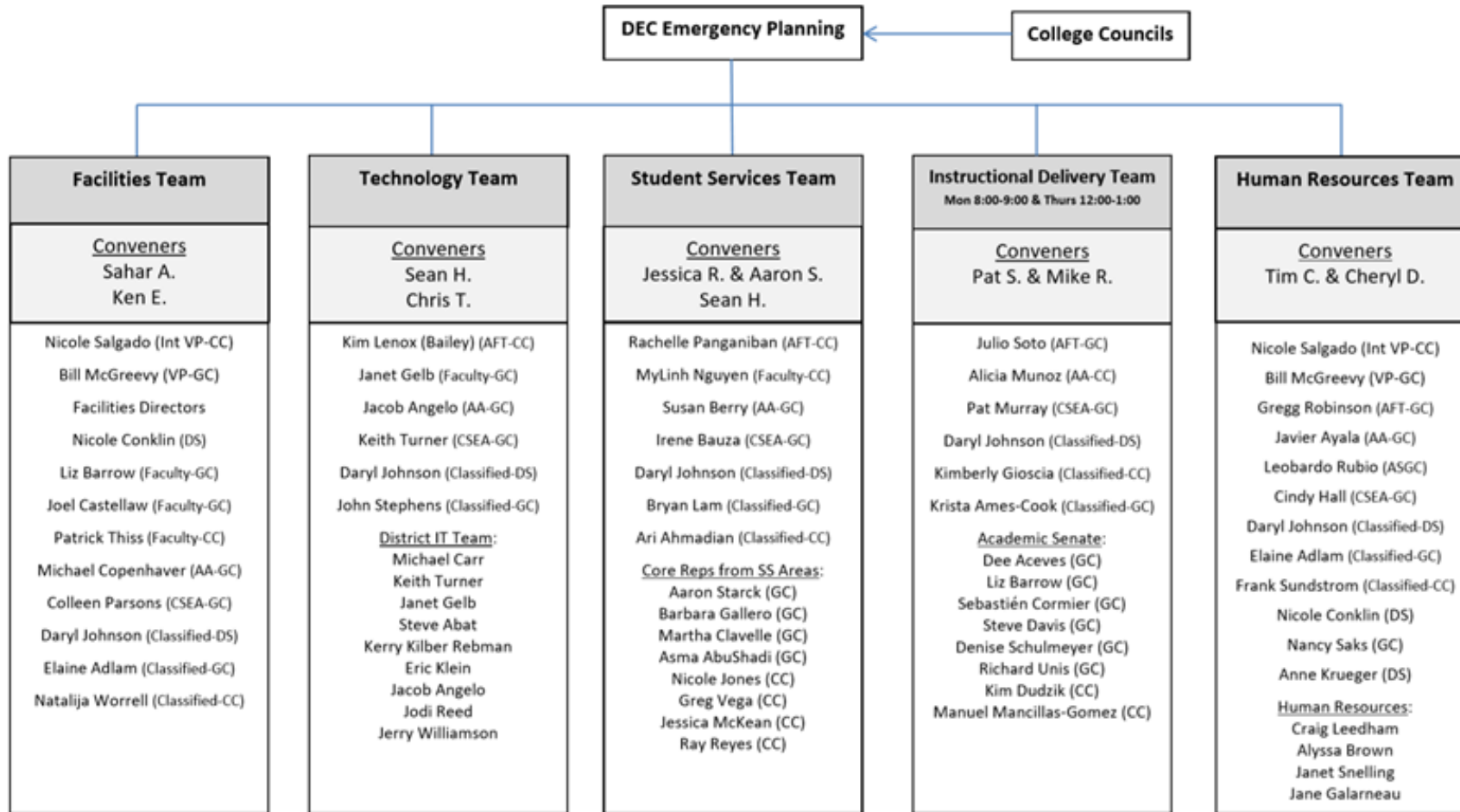
Source: DEC April 17, 2020

GCCCD: Rapid Response Planning Teams

RAPID RESPONSE PLANNING TEAMS- DISTRICTWIDE

1. FACILITIES
2. TECHNOLOGY
3. INSTRUCTION
4. STUDENT SERVICES
5. HUMAN RESOURCES

RAPID RESPONSE PLANNING TEAMS



Goal: Prepare to return to campuses for each phase; execute
Report: To and through college councils and DEC

Meet: Twice weekly (or more often)
Execution: Through existing processes (e.g., procurement, scheduling, etc.)

Cuyamaca College Communication Tree

Cuyamaca College Council (inc. Senates)

- District Executive Council

Instructional Leadership Advisory Team- ILAT (inc. Senates)

- Instruction Rapid Response Planning Team

Student Services Leadership Advisory Team-SSLAT (inc. Senates)

- Student Services Rapid Response Planning Team

Facilities Committee (inc. Senates)

- Facilities Rapid Response Planning Team

Technology Committee (inc. Senates)

- Technology Rapid Response Team

Q&A

Moderators, Kim and Natalija, will pull questions from the Chat room.

How will we promote
social and physical
distancing?

Social and Physical Distancing



- The Facilities Rapid Response Planning Team is making recommendations and preparations
- Classrooms will likely have fewer chairs and tables
- Some facilities will be closed for use (e.g. small conference rooms)
- There will likely be Sneeze Guards partitions
- Safe Zones demarcating spots to stand

What will the approach
be with vulnerable
populations?

Vulnerable Populations

- The Human Resources Rapid Response Planning Team is handling personnel related matters
- There will be consideration for students and employees 65+
- There will be consideration for those with compromised health or in high risk groups

When will we know plans
for fall?

Fall 2020 Plans

- The Instruction Rapid Response Planning Team is making plans and recommendations for fall 2020
 - Considerations- Online? F2F? Access for Faculty? Some CTE Courses? Faculty training and support? Faculty Technology needs? Social/Physical Distancing?
- The Student Services Rapid Response Planning Team is making plans and recommendations for fall 2020
 - Considerations- Online? F2F? Access for Staff/Faculty? Technology needs? Social/Physical Distancing?

Q&A

Moderators, Kim and Natalija, will pull questions from the Chat room.

How are we addressing
technology needs?

Technology Needs

- The Technology Rapid Response Planning Team is developing plans and making recommendations for technology
- Cuyamaca is purchasing computers for needy students
 - SD Foundation grant
 - GCCC Foundation
- Cuyamaca is distributing emergency grants to students
 - CARES Act \$1.4 Million
 - Promise Program
 - GCC Foundation; Equity
- Cuyamaca has distributed laptops to employees and exploring options to expand

When will we be
returning to campus?

Your thoughts and suggestions

- "Not to move too fast"
- "I just hope we don't do this too soon."
- "The reopening of campus should be within the guidelines...of Sacramento...put the health and welfare of students, faculty and staff before all else."
- "Couldn't classified employees...return sooner?"
- "...hope we could get our campus running soon...safely"
- "..my preference is to teach online until there is a vaccine."

Our return to campus

- We don't know yet.
- When we do, it'll be a phased approach, likely with "rolling occupancy."
- We will err on the side of safety.
- We will time our reopening with state and local mandates and guidances.



We will behave differently

- We will be practicing physical and social distancing
- We will not be handshaking
- Face coverings
- Large gatherings will likely still be prohibited
- Athletic events will likely not have spectators
- Travel restrictions
- Quick identification and notification of exposure

Here's what we do know:

- Our communities and students need us
- Our staff, faculty and students are resilient
- We will do our best to serve students



Resilience

The Courage to Come Back

Thank you for joining!

Next Steps...